



# EPIC™ MITRAL

**STENTED TISSUE VALVE**  
WITH LINX™ AC TECHNOLOGY



LEAFLET BEHAVIOR AND STENT MECHANICS

**Epic. By Design.**

Information contained herein for **DISTRIBUTION outside of the U.S. ONLY.**  
Check the regulatory status of the device in areas where CE marking is not the regulation in force.



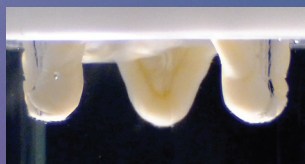
## FLEXIBLE DESIGN FOR NOW AND LATER

Built on the Biocor Platform that has been trusted for over 30 years, the Epic Platform has been reimagined to support options for today and tomorrow.

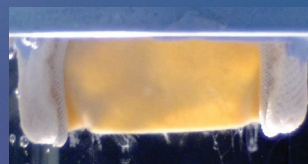
Curtaining is a characteristic of bioprosthetic valves in which the leaflets, when opened, stand tall or form a “curtain” between stent posts.<sup>1a</sup>

Epic™ Mitral leaflets are not prone to curtaining, which can result in less LVOT obstruction.<sup>1a</sup>

### LEAFLET BEHAVIOR WHEN OPENED



Epic™ Mitral  
leaflets



C-E PERIMOUNT/  
Magna Mitral Ease‡  
pericardial leaflets



25 mm Epic™ Mitral (left) and Magna Mitral Ease‡ (right) with representative rods inserted

“

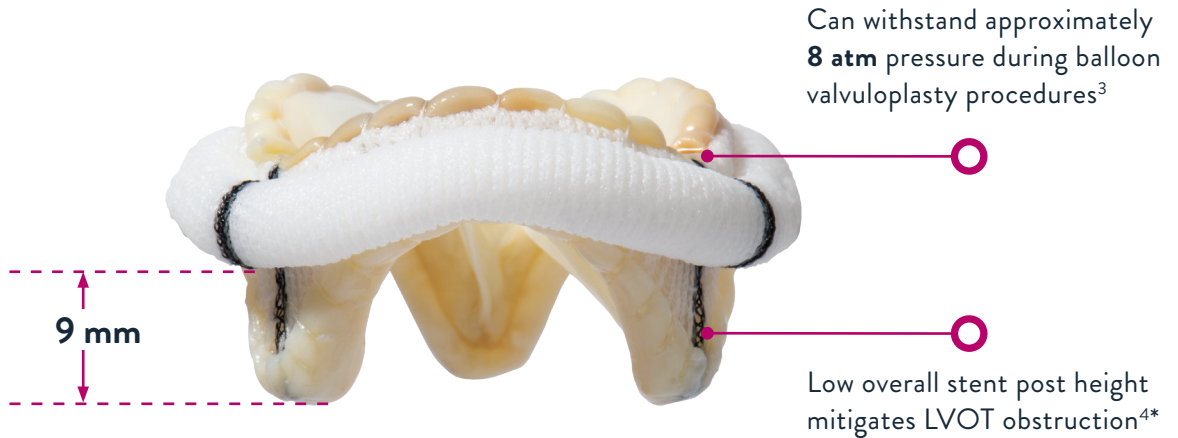
In the bench test, we observed that the pericardial leaflets stand tall unlike the porcine leaflets which crumple. This will result in a greater degree of LVOT obstruction with pericardial leaflets. —Bapat, *et al.*<sup>2</sup>

<sup>a</sup>Results based on internal testing.

Information contained herein for **DISTRIBUTION outside of the U.S. ONLY.**

Check the regulatory status of the device in areas where CE marking is not the regulation in force.

# PRESERVING THE LVOT



## VENTRICULAR PROTRUSION\*



“

We observed that it may be the combination of height and type of leaflets—that is, porcine leaflets versus pericardial leaflets—than height alone which may be important. —Bapat, et al.<sup>2</sup>

\*For 27 mm valve size, measured from the farthest point of the cuff.

# BUILT FOR TODAY, INSPIRED BY TOMORROW.

## Epic. By Design.

### References

1. Tests performed by and data on file at Abbott. 2. Bapat V, et al. Factors influencing left ventricular outflow tract obstruction following a mitral valve-in-valve or valve-in-ring procedure, part 1. *Catheterization and Cardiovascular Interventions*. 2015;86:747-760. 3. Allen K, et al. Bioprosthetic valve fracture to facilitate transcatheter valve-in-valve implantation. *Ann Thorac Surg*. 2017;104:1501-1508. 4. Guler N, et al. Left ventricular outflow tract obstruction after bioprosthetic mitral valve replacement with posterior mitral leaflet preservation. *Texas Heart Institute Journal*. 2006;33:399-401. 5. Epic™ Instructions for Use. 6. Magna Mitral Ease IFU. 7. Medtronic Mosaic Bioprosthesis Aortic and Mitral Brochure. #UC200103933b EN.

**CAUTION:** This product is intended for use by or under the direction of a physician. Prior to use, reference the Instructions for Use, inside the product carton (when available) or at [eifu.abbottvascular.com](http://eifu.abbottvascular.com) or at [medical.abbott/manuals](http://medical.abbott/manuals) for more detailed information on Indications, Contraindications, Warnings, Precautions and Adverse Events.

Information contained herein for **DISTRIBUTION outside of the U.S. ONLY**. Check the regulatory status of the device in areas where CE marking is not the regulation in force.

Illustrations are artist's representations only and should not be considered as engineering drawings or photographs. Photos on file at Abbott.

### Abbott

Park Lane, Culliganlaan 2b, 1831 Diegem, Belgium Tel: 32.2.714.14.11

™Indicates a trademark of the Abbott group of companies.

‡ Indicates a third party trademark, which is property of its respective owner.

[www.cardiovascular.abbott](http://www.cardiovascular.abbott)

©2020 Abbott. All rights reserved. MAT-2004809 v1.0 | Item approved for OUS use only.

